

# ROBUST. INNOVATIVE. WASHROOMS.

FOR THE  
SECURE  
SECTORS



## Wallgate®

ROBUST. INNOVATIVE. WASHROOMS

[wallgate.com](https://www.wallgate.com)

# WHY WALLGATE WASHROOMS WORK HARDER

At Wallgate we are excited by the freedom to innovate; solve washroom and sanitaryware problems with clever, considered, and imaginative solutions. We believe this is forged from decades of experience, determination, and persistence.

Our story is one of change, innovation and development. This innovative and willing-to-help approach guides and dictates how we work, and how we work with others, to be part of their story too, working hard together to produce the perfect designs and best-fit

products so we always achieve the most effective and efficient end result. We understand the importance of hygiene and the need to efficiently manage water and energy use in the commercial, healthcare and secure environments.

We see ourselves as problem solvers, looking to tackle some of the big questions and deliver successful solutions.

## ROBUSTNESS, INNOVATION AND QUALITY IN EVERYTHING WE DO



### ROBUST

Sturdy in construction, designed to withstand impact and can operate without failure under a variety of conditions



### INNOVATIVE

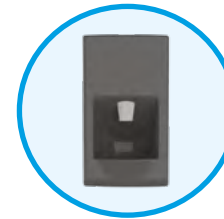
Working closely with industry leaders to design solutions that improve washrooms and sanitaryware solutions and provide a better user experience



### QUALITY

Designed and manufactured to the highest international standards

## PRODUCT RANGE



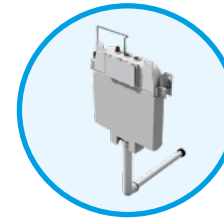
HAND WASH DRYERS



BASINS & VANITY TOPS



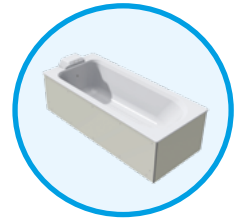
WC PANS



WC PAN & URINAL FLUSHING



URINALS & ACCESSORIES



BATHS



SHOWERS



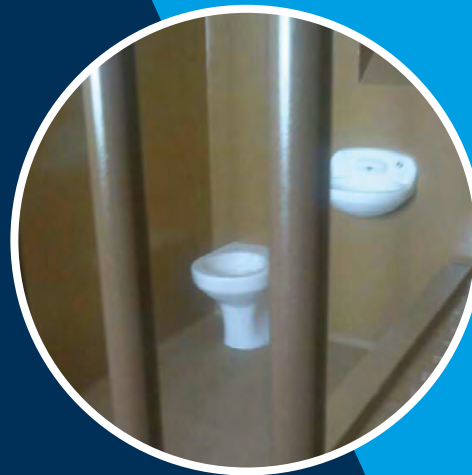
ACTIVATION & CONTROL



WASHROOM ACCESSORIES

WE CAN ALSO WORK WITH YOU TO CREATE BESPOKE WASHROOM SOLUTIONS TAILORED TO YOUR PROJECT'S NEEDS





# ROBUST. INNOVATIVE. SECURE WASHROOMS

PRISONS



POLICE & IMMIGRATION





# HIGHLY SECURE WASHROOMS FOR PRISONS

For prisons, anti-ligature and anti-vandal sanitaryware together with well managed water control systems, are essential when installing washrooms for the secure sector.

Our solid surface range is engineered from a high-grade polyester resin making the product extremely tough, chemical-resistant, exceptionally hardwearing and very reliable.

Our sanitaryware products are BS EN33 compliant, low flush

volume and UK Ministry of Justice Safer Cell approved. When coupled with our intelligent water, power and lighting controls, they are suitable for use within both the toughest and the highest risk areas.

## HOW DOES WALLGATE SANITARYWARE BENEFIT THE PRISON SECTOR?

- APPROVED:** All products meet the highest industry, market and national approvals
- RELIABILITY:** Offering reliable products that always deliver as promised, and exceed expectations
- ANTI-LIGATURE:** Designed and tested to reduce the risk of being used as a ligature attachment point
- ROBUST:** Sturdy in construction, designed to withstand impact and can operate without failure under a variety of conditions
- USER MANAGEMENT:** Intelligently controlling user usage to maximise efficiencies while recording data and patterns for analysis
- NORMALISATION:** Designed to appear and operate as conventional washrooms, providing a familiar, secure and normalised environment



Our comprehensive range of anti-ligature, anti-vandal sanitaryware products are used widely among prisons worldwide. HMP Berwyn, HMP Low Moss and Ravenhall in Australia, just to name a few.

With over 40 years' experience and a high-end portfolio of clients, we have an excellent relationship with prison services worldwide, supplying quality, robust, innovative sanitaryware and washroom solutions suitable for all secure environments.

Where accountability and compliance is key, you can have full trust in us to always deliver reliable, innovative and efficient washroom solutions.

### ROBUST, RELIABLE, LONG-LASTING BASINS

**Featured model:**  
anti-ligature solid surface wash basin



### ROBUST, RELIABLE, LONG-LASTING WC PANS

**Featured model:**  
anti-ligature solid surface WC pan



**"Wallgate is the UK market leader when it comes to prison cell sanitaryware and cell controls. They are always extremely helpful and professional; and provide excellent technical support from procurement to commissioning. Wallgate is open to new ideas, developing their products, service, packaging and delivery methods to suit our project requirements. I would definitely recommend Wallgate's custodial products and I shall use them on future custodial projects."**

Senior Project Engineer, Skanska



### WALLGATE RETRO-FIT SANITARYWARE AT HMP LOWDHAM GRANGE

HMP Lowdham Grange, situated in Nottingham, has undertaken two extensions over the past decade. Operated by private service provider Serco Group, it was built in 1998 as the third prison in the private sector to hold 500 male prisoners.

Over time, a further house block was commissioned to increase operational capacity to 656 places, followed by the opening of a further two house blocks more recently, to provide high quality accommodation for a further 260 prisoners.

Serco required a bespoke solution that resulted in retro-fit basins, shower controllers and WC pans being installed in place of the original damaged porcelain products. These retro-fit basins provided a long lasting solution in high security environments.

Serco Facilities Manager commented: "Wallgate were keen to listen to us and develop a new product to suit our needs. They were proactive innovators and that is paramount to us at Lowdham Grange.

"We also fitted a communal shower area within the prison whereby one controller controls eight showers, saving money on maintenance and repairs. Their products are robust, the service is always friendly and helpful; we will continue to use Wallgate in the future," he added.



# DURABLE SANITARY WARE FOR POLICE CUSTODY & IMMIGRATION CELLS



Washrooms for police custody facilities must be robust and anti-ligature to the highest of standards.

Our highly robust and anti-ligature solid surface sanitaryware products are BS EN33 compliant; low flush volume approved and UK Home Office approved, and are specifically engineered to withstand extremely

hard treatment with heightened anti-ligature properties, purposefully for use in police custody environments.

## HOW DOES WALLGATE SANITARYWARE BENEFIT THE POLICE SECTOR?

- APPROVED:** All products meet the highest industry, market and national approvals
- ROBUST:** Sturdy in construction, designed to withstand impact and can operate without failure under a variety of conditions
- ANTI-LIGATURE:** Designed and tested to reduce the risk of being used as a ligature attachment point
- ANTI-VANDAL:** Products designed and manufactured to withstand deliberate destruction or damage
- DURABILITY:** Capable of withstanding wear and tear or decay over many years of use
- USER MANAGEMENT:** Intelligently controlling user usage to maximise efficiencies while recording data and patterns for analysis



**“Wallgate offer fantastic service from the off; they have a helpful team from sales through to technical. I would highly recommend Wallgate and I will definitely be using them for all projects moving forward where anti-ligature sanitaryware is required.”**

Adam Bagley  
Project Engineer, SES Engineering Services

Nationwide, there are many police forces and immigration centres that already trust us to provide them with their sanitaryware products and washroom solutions.

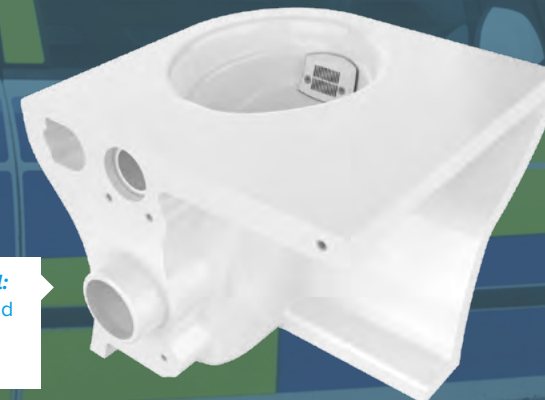
With over 40 years' experience consistently delivering quality services to some of the most extreme environments, we have the ability, expertise and accreditations to tackle any project.

## ROBUST, ANTI-LIGATURE, LONG-LASTING BASINS



**Featured model:**  
anti-ligature solid surface recessed wash basin

## ROBUST, RELIABLE, LONG-LASTING WC PANS



**Featured model:**  
anti-ligature solid surface corner WC pan

**SOLID SURFACE**  
SEE PAGE 48 FOR MORE



## WALLGATE A PART OF NEW STATE-OF-THE-ART CUSTODY SUITE

West Midlands Police Central Custody Suite, a new 60-bed facility in Oldbury, opened in early 2016. Complete with en-suite cells, it has been kitted out with the latest state-of-the-art equipment, to ensure a safer environment for staff and detainees. The new generation of custody suites set high standards for their washrooms and sanitaryware; the goal was to showcase a new approach to policing, not just a new building.

Industry leading engineering provider, Lorne Stewart was involved in the technical submissions and procurement stages as the M&E contractor. Having worked with Wallgate previously, confidence in product reliability and service support was a given. Each building contains 60 holding cells; the Oldbury site houses smaller offices and Perry Barr central custody suite has dedicated facilities for partners working in mental health, substance misuse and immigration.

Wallgate products were installed in the cell blocks. Stewart Parsons, Mechanical Project Engineer commented, “Wallgate’s products are undoubtedly the best on the market. Their products are robust, easy to clean and extremely long-lasting. If you want an intelligent, smart, washroom solution then use Wallgate.”

# SECURE PRODUCTS



## ROBUST, DURABLE BASINS

In the secure sector, anti-ligature and anti-vandal sanitaryware are paramount factors to consider when installing washrooms.

Our range of basins cater for all applications including the highest risk areas and environments.

Made from highly robust solid surface material, they are normal in appearance and many have anti-ligature properties.

There are a range of options available, to suit specific needs, and all can be coupled with our powerful water management systems.

### FEATURES AND BENEFITS

- Extremely tough design
- Robust and ligature resistant
- Long lasting, proven 25+ years life
- Reduced operating costs
- Ease-of-installation
- Non-institutional in appearance

SOLID SURFACE  
SEE PAGE 48 FOR MORE





## EXTREMELY DURABLE WC PANS

Our range of WC pans are made of highly damage-resistant, high grade solid surface material.

All models are of domestic appearance to assist in normalising the environment and are purposefully anti-ligature in design.

Although suitable for use without a seat, a wide range of anti-ligature seat options are available.

With dual flush approval and available in both P and S trap configurations our WCs are compatible with a wide range of flushing methods.

### FEATURES AND BENEFITS

- Highly robust
- Improved hygiene
- Designed for seat-less use
- Anti-ligature design
- Easily re-finished to retain appearance
- Enables S or P trap waste connections
- Non-institutional in appearance
- Disabled compliant options



## HIGHLY EFFICIENT FLUSHING SYSTEMS

We offer a wide selection of WC and urinal flush options available as standalone items or used in conjunction with our sanitaryware ranges.

These include electronic, pneumatic and mechanical cisterns and direct flushing valves with a wide range of robust activation devices.

- Highly efficient use of water
- Minimal service duct space required
- Concealed to prevent abuse
- Dual flush capability
- Robust and reliable
- Piezo and/or infrared electronic activation



## SHOWERS

We have a number of anti-ligature shower activation options ranging from simple pre-set single temperature, through to thermostatically controlled user choice, catering for the highest security environments.

Each can be dispensed through wall or ceiling mounted safe anti-ligature shower heads including a detachable option. All are managed by our WDC range of controllers.

### FEATURES AND BENEFITS

- Anti-ligature
- Highly robust
- Very low maintenance
- Capable of low flow rate
- Integrates with our controllers



## INTELLIGENT WATER CONTROLS

We supply a comprehensive range of electronic, mechanical and pneumatic water-activation methods for our WCs, basins and showers together with a range of highly capable and flexible electronic controls.

The electronic controller range has the ability to manage water only or water, lighting and power to one or two rooms. Incorporating features such as timed flow, purge cycles, time slots and lock outs, they also log and store individual outlet activity for analysis.

The electronics can be networked to a central control point for remote operation or operate as independent devices.

While our controls are designed to integrate seamlessly with our specialist range of sanitaryware,

they can also be supplied as a standalone system to give the benefits of a well-managed control system when used with existing sanitaryware.

In addition to the above, a range with pneumatic activation is available.



### FEATURES AND BENEFITS

- Automatic timed flow
- Automatic lockouts
- Fully programmable
- Operates up to 8 outlets
- Fully plug and play
- Low voltage, infrared or Piezo activation
- Hygiene and maintenance purging
- Remote water, power and light isolation
- Local or networked capability
- Automatic data logging – all parameters



## SECURE WASHROOM ACCESSORIES

We provide a range of anti-ligature washroom accessories to complement our main sanitaryware items including taps, hand rails, shelves, mirrors, toilet roll holders and water outlets, all of which are made to the exact same highly robust standards.



### POPULAR ACCESSORIES

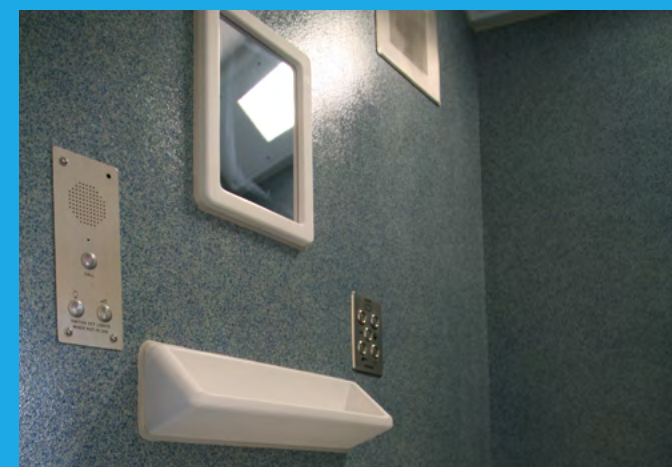
Our accessories have been specifically developed to complement our core range of sanitaryware products providing you with a fully integrated washroom.

#### The range includes:

- Mirrors
- Shelves
- Toilet roll holders
- Thermostatic mixing valves
- Manifold assemblies
- Key switches
- Urinals
- Anti-ligature grab rails
- Anti-ligature taps



MORE ONLINE





# INNOVATION & THE WALLGATE WAY

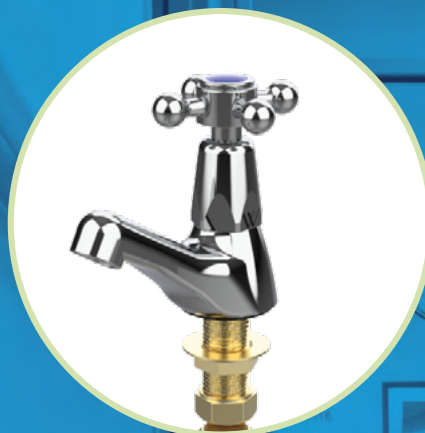
Innovation is at the heart of our ambition to continue being the market-leading provider of sanitaryware products and washroom solutions, worldwide.

Continuous innovation and rapid transformation have been themes throughout our history, which, as a company traces back to the 1970s with the invention and installation of the first all-in-one hand wash dryer in the UK.

Technology and product development are central to our plans, to keep providing our customers with the ideal solution that fits each and every one of their project needs.

Our close working relationships with customers is key to our product development ethos, giving us insight into the needs of our customers as well as specifiers and end users. We aim to develop products that

have purpose, so that our customers use them again and again. Our innovative and willing-to-help approach guides and dictates how we work, and how we work with others, working hard together to produce the perfect designs and best-fit products so we always achieve the most effective and efficient end result.



## INNOVATIVE

Working closely with industry leaders to design solutions that improve washrooms and sanitaryware solutions and provide a better user experience.

## WORKING TOWARDS A BETTER FUTURE

We have been working with care specialists to develop a new care and dementia-friendly product range that could transform washroom solutions and water management within dementia and aged care facilities.

The range (currently in development) includes a WC flush, basin taps and a shower activation that purposely look, feel and behave as 'normal' and 'familiar' to those with dementia yet provide control over the water flow, helping to retain their independence.

We are excited and enthusiastic by the prospect of making a positive difference to peoples' experiences and care; something we are passionate about.

Technology and product development are central to our plans, to keep providing our customers with the ideal solution that fits each and every one of their project needs.

Wallgate has worked closely with experts such as DSDC University of Stirling and HammondCare to develop products that will create a safer environment for people living with dementia and extend independence.

Working closely with healthcare professionals allows Wallgate to develop products with purpose, creating a normalised and safer environment.



“These products are a superb blend of traditional tapware with innovative technology, with huge potential to improve the lives of people living with dementia”

DSDC University of Stirling

“A huge step forward in terms of usability of these bathroom items by people with dementia and older people generally”

HammondCare

# SOLID SURFACE TECHNOLOGY

Our solid surface is made from a combination of specially formulated Polyester resin together with an extremely high grade Aluminium Trihydrate resulting in a very tough, high impact, chemical and fire-resistant material.

Our solid surface is manufactured without the use of a gel coated surface enabling the product to be continuously refreshed and renewed looking unspoilt for its life. The material meets the highest levels of durability and fire resistance.

Solid surface products have enabled end users to benefit from high quality

sanitaryware, eliminating many of the problems experienced by the use of conventional washroom materials and products.

The nature of the solid surface ensures products have longevity, typically 25 years or more. It is an ideal solution in environments such as commercial, healthcare and

secure facilities where standard sanitaryware is not enough.

All our solid surface products meet our own very high quality and aesthetic standards, as well as the industry's national and international performance standards.

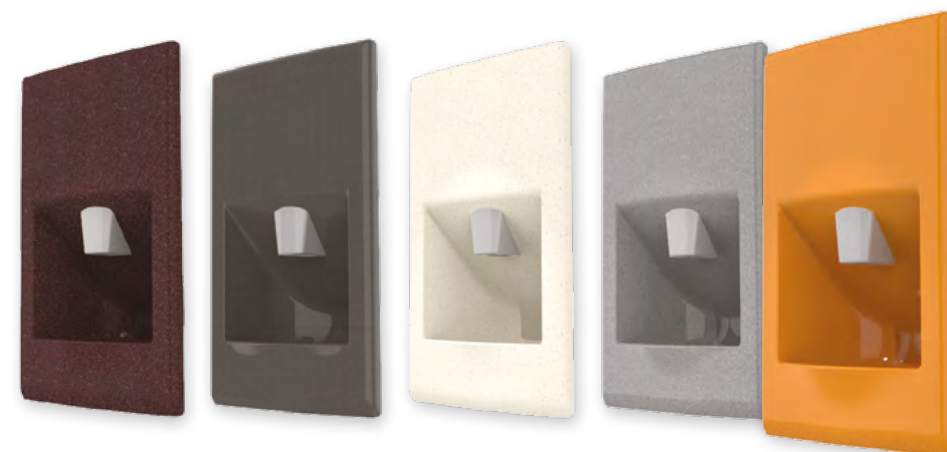
## SOLID SURFACE BENEFITS

- Highly impact resistant
- Bespoke designs
- Innovative
- Wide colour range
- Normalises the environment
- Stain resistant
- Non-flammable
- Renewable surface



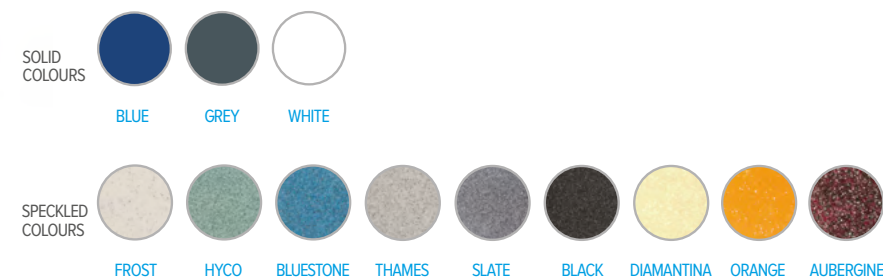
## THE BENEFIT OF CHOICE SOLID AND SPECKLED COLOURS

All products made from solid surface can be produced in a range of solid and speckled colours, allowing you to find the perfect match for your project needs.



## SOLID AND SPECKLED-EFFECT COLOURS

Various colour options are on offer and custom colours are available on request, meaning you will find exactly what you are looking for.





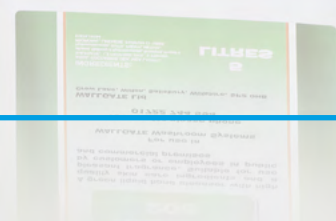
# HAND SOAP & CLEANING MATERIALS

The Walcare range offers a low cost option through to a more specialised version for at risk users. Available in 2.5 or 5 litre containers, all are formulated to provide a continuous trouble free operation. When used in our Thrii hand wash dryer units our soap can be dispensed as liquid or foam.

We offer a pack containing all of the materials required for everyday cleaning, refreshing and re-finishing to keep your solid surface both hygienic and in pristine condition.



DETAILS  
ONLINE



# ASSURED AFTERCARE

As a company we treat aftercare very seriously. When you are buying a washroom you can be assured that great care and attention is paid to ensure your project is delivered to the highest quality possible. An extensive after-sales service is available, including:

- ▮ Nationwide service engineers
- ▮ Technical support
- ▮ Commissioning
- ▮ Training
- ▮ Genuine parts
- ▮ Soap and consumables
- ▮ Maintenance contracts
- ▮ Network commissioning

**96%**  
OF OUR CUSTOMERS  
CONTINUE TO  
RECOMMEND US



**Wallgate®**  
ROBUST. INNOVATIVE. WASHROOMS

## ANTI-LIGATURE

Recently we have become aware that there is some inconsistency in the market as to the exact meaning of "anti-ligature". Where we use this phrase in connection with our products it means that we have designed the product in order to reduce any risk of that product being used as a ligature attachment point. Our anti-ligature products have been designed to reduce the likelihood of a ligature attachment, however it is the responsibility of the purchaser or service provider to ensure it is risk assessed and suitable before use.

# DISCUSS YOUR NEXT PROJECT WITH OUR EXPERT TEAM

If you have an upcoming project you feel could benefit from our innovative products and want some helpful advice, contact our technical team:

**Tel:** +44 (0) 1722 744 594

**Email:** [sales@wallgate.com](mailto:sales@wallgate.com)

**Web:** [wallgate.com](http://wallgate.com)



**96%**

OF OUR CUSTOMERS  
CONTINUE TO  
RECOMMEND US



**Wallgate**<sup>®</sup>  
ROBUST. INNOVATIVE. WASHROOMS