

# WALLGATE THRII<sup>®</sup>

ROBUST, EFFICIENT, PRACTICAL  
ALL-IN-ONE HAND WASH DRYERS



**Wallgate**<sup>®</sup>

ROBUST. INNOVATIVE. WASHROOMS

[wallgate.com](http://wallgate.com)

## CONTENTS

|    |                       |    |                                  |
|----|-----------------------|----|----------------------------------|
| 03 | Wallgate Thrii        | 12 | Solid surface technology         |
| 04 | Features and benefits | 13 | Technical data                   |
| 06 | Compact Thrii         | 14 | Hand soap and cleaning materials |
| 08 | Stainless steel Thrii | 15 | Aftercare                        |
| 10 | Solid surface Thrii   |    |                                  |



# ROBUST, INNOVATIVE AND QUALITY IN EVERYTHING WE DO

For full product details including BIM, product specifications and CAD drawings, visit [wallgate.com](http://wallgate.com)

Tel: +44 (0) 1722 744 594 | Email: [sales@wallgate.com](mailto:sales@wallgate.com)

# INTRODUCING WALLGATE THRII®

The Thrii is the next generation all-in-one hand wash dryer that gives you complete control in the washroom.

It combines an attractive design with features that offer significant advantages over traditional washroom solutions. State-of-the-art technology and simple to use

controls allow you to customise the Thrii to suit your specific requirements, making it work effectively for you.

SAVE MONEY  
ON OVERALL  
RUNNING  
COSTS

See page 04



Compact Disabled  
Compliant Thrii  
See page 06



Stainless  
Steel Thrii  
See page 08



Solid  
Surface Thrii  
See page 10

# FEATURES AND BENEFITS

## SAVE SPACE, WATER, ENERGY & TIME

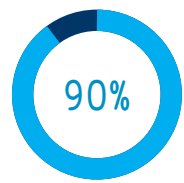
The design of the Thrii hand wash dryer eliminates the problems experienced with traditional washroom solutions. Gone are the space, hygiene and efficiency issues, and being robust, they'll last for 25 years or more.

Wallgate's next generation all-in-one Thrii hand wash dryer is the answer to your washroom problems. Its compact design saves you space, is up to 50% more water and 75% more energy efficient and gives you customisable options, making the Thrii

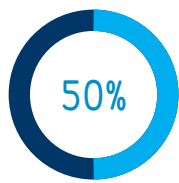
hand wash dryer more practical, eco-friendly and economical. The Thrii is state-of-the-art technology ready to make any washroom more hygienic, hassle-free and intelligently controlled.

- No touch system improving hygiene and customer experience
- Rapid wash cycle completed in 30 seconds for quicker footfall
- Robust, anti-vandal design with a projected lifespan of 25 years
- The Thrii range is available in Wallgate's robust solid surface material or supersilk brushed finish

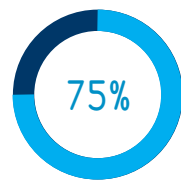
- Wallgate's solid surface material can be repaired if damaged and is designed to be tough, high impact and fire-resistant
- Front or rear access for soap refill and access to controls
- Designed for easy installation
- 120V or 240V options available



**Save money**  
on overall running costs\*



**Save water**  
up to 50% per cycle



**Save energy**  
up to 75% per cycle



**Return on investment**  
possible in just 1 year!



**Save time**  
30 seconds rapid cycle



**Longevity**  
projected lifespan of 25 years



The Thrii has a completely automated and customisable set up meaning it can be user-configured to a variety of sequence settings, making it extremely versatile and suitable for many different applications and markets.

- Dispensing foam provides an incredible 1,500 uses per litre
- Instantaneous water heater only consumes power when in use, saving money
- Heated air function that can be turned on or off

The Thrii has a soap refill indicator to let you know when soap's running low, along with a light-up bowl for improved user experience and site management. If hands are no longer sensed in the bowl, the Thrii will automatically cut off and reset, saving water and energy.

- Less than 0.02kWh electrical power is used per cycle
- Less than 0.3 litres of water is dispensed per cycle

### SOLID AND SPECKLED-EFFECT COLOURS

Various colour options are on offer and custom colours are available on request, meaning you will find exactly what you are looking for.



CUSTOM COLOURS AVAILABLE ON REQUEST

Wallgate's solid surface material is available in a suite of matching sanitaryware products to complement the Thrii.

### 3 STEPS TO A FASTER, MORE EFFICIENT CLEAN

**Soap**  
An infra-red light sensor detects hands being placed in the bowl area of the Thrii and this triggers the start of the washing cycle by dispensing soap in either liquid or foam format.

**Water**  
Water is heated instantly via an integral water heater and dispensed. The volume of water can be controlled by you as part of the programming operation.

**Air**  
The dryer has three different speed settings and automatically stops operating if the user removes their hands.

The entire washing and drying cycle can be completed in 30 seconds.

# COMPACT THRII SPACE-SAVING AND DISABLED COMPLIANT HAND WASH DRYERS

The disabled compliant compact Thrii has been cleverly designed using a square shaped design that is space saving and made from Wallgate's long lasting solid surface material. The compact Thrii is easy to maintain, robust and designed to optimise space, save water and reduce energy use.

- Option to install at a disabled compliant height
- A compact square shaped design that is ideal if space is limited
- Solid surface fascia can be repaired and refreshed if damaged
- Range of solid surface colour options to suit any washroom
- One piece design for easy cleaning and improved hygiene
- Fully customisable to the customer's requirements
- Stainless steel surface mounting box available where recessing is not an option



“THE THRII IS A BRILLIANT PRODUCT; IT HAS SAVED THE SCHOOL A LOT OF MONEY AND IS EXTREMELY HYGIENIC.”

Nick Trimby, Kingdown Secondary School Site Manager



## CASE STUDY: KINGDOWN SECONDARY SCHOOL

Kingdown Secondary School has worked closely with Wallgate for over six years, installing robust and innovative washroom solutions on both new build and refurbishment projects.

Catering for 1,600 pupils, inevitably washrooms have high footfall, and therefore water saving and energy efficiency is a high priority.

The school wanted to create an open-plan washroom solution for both boys and girls to eliminate it being an area of 'congregation' for the students.

Due to the breadth of product range, innovative approach and a good past working relationship, Wallgate were selected to provide the new washrooms for the school's pupils.

Thrii hand wash dryers, WC pans and disabled facilities were installed in the year 9 to 11 bathrooms and also in the new purpose-built sixth form toilets too.

Site manager Nick Trimby commented: "Wallgate always help deliver the most suitable water saving solution and easy to use technology best suited to the academic environment. We now have school washrooms that children want to use and will look after for years to come."

Nick is delighted with the finished installation and added: "Wallgate provide great service, the Thrii is a brilliant product; it has saved the school a lot of money in soap and is extremely hygienic. Their products are robust, perfect for this industry – I can't fault them!"

CLIENT  
KINGDOWN SECONDARY SCHOOL

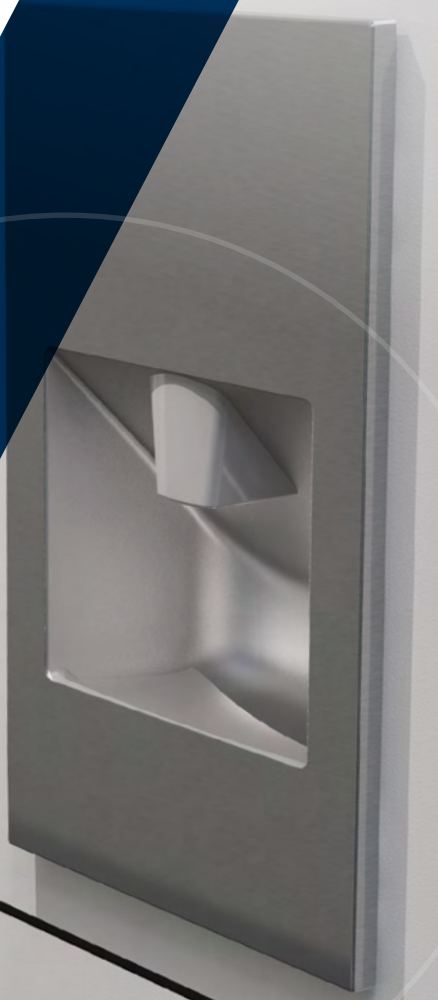
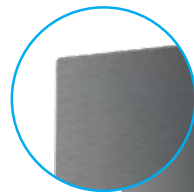
SECTOR  
EDUCATION

PRODUCT  
COMPACT THRII HAND WASH DRYER

# STAINLESS STEEL THRII FOR CONTEMPORARY WASHROOM ENVIRONMENTS

The stainless steel Thrii range offers a supersilk brushed finish that is corrosion resistant, anti-vandal and easy to clean. The stainless steel Thrii is easy to maintain and designed to optimise space, save water and reduce energy use.

- Ideal for public washrooms and extreme environments due to its corrosion resistance
- Easy to clean supersilk brushed finish makes it the first choice for hospitals, kitchens, food and pharmaceutical facilities
- Fully customisable to the customer's requirements
- Long lasting stainless steel fascia
- Easy to maintain
- Stainless steel surface mounting box available where recessing is not an option



“THE THRII IS COMPACT, ROBUST, EASY TO INSTALL AND DOES EXACTLY WHAT WE NEED IT TO DO.”

Linda Lazar, Housekeeping Manager at Carnival Cruise Line



## CASE STUDY: CARNIVAL CRUISE LINE

After the successful installation of the Wallgate Thrii-Marine hand wash dryer across multiple Carnival Cruise ships, Carnival has once again chosen Wallgate's next generation stainless steel Thrii Marine for Carnival Horizon.

Carnival Horizon, launched in 2018, is the second Vista-class vessel in the Carnival fleet. The 133,500 ton, 3,974 passenger cruise ship has 14 decks, 1,987 cabins and a crew of 1,450. The efficient and robust design of the all-in-one Thrii-Marine hand wash dryer makes it an ideal choice to meet the demands made for intensive and concentrated use.

The Thrii-Marine was originally developed in collaboration with Carnival Cruises to ensure it met the specific needs of the cruise ship industry and was able to withstand the harsher marine environment. Carnival Cruises also needed a hand washing facility that

would meet the Vessel Sanitation Program (VSP) requirements, which are in place to prevent and control the introduction, transmission, and spread of gastrointestinal illnesses on cruise ships. By being easy to clean and not having touch control, the Thrii-Marine helps to implement these VSP requirements.

Linda Lazar, housekeeping manager at Carnival Cruise Line, said: "We have worked closely with Wallgate over a number of years and are very pleased with the quality of the products and service we've received. The Thrii is compact, robust, easy to install and does exactly what we need it to do, helping our guests and crew to maintain hand hygiene standards at their convenience in all food self-service areas."

CLIENT  
CARNIVAL CRUISE LINE

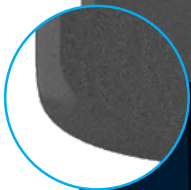
SECTOR  
TRANSPORT

PRODUCT  
STAINLESS STEEL THRII-MARINE  
HAND WASH DRYER

# SOLID SURFACE THRII ROBUST DRYERS FOR DEMANDING CONDITIONS

The solid surface Thrii has been designed with smooth curved contours to suit modern washrooms. The solid surface Thrii is easy to maintain, robust and designed to optimise space, save water and reduce energy use.

- Smooth curved contours to suit modern washrooms
- Made from Wallgate's long lasting robust solid surface material
- Solid surface fascia can be repaired and refreshed if damaged
- Range of solid surface colour options to suit any washroom
- One piece design for easy cleaning and improved hygiene
- Fully customisable to the customer's requirements



“AN EXCELLENT, HASSLE FREE SERVICE WITH EXCELLENT ENGINEERS ON SITE.”

Rick Warran, Architectural Technician for Teignbridge District Council

## CASE STUDY: TEIGNBRIDGE DISTRICT COUNCIL



Teignbridge District Council has upgraded 33 Wallgate hand wash dryers approaching 30 years old in exchange for the next generation all-in-one Thrii.

The council has been using Wallgate's hand wash dryers since 1990, with units now as old as 29 years still in use. They manage 19 sites and keeping them well preserved with easy to maintain and quality sanitaryware is a priority. After years of using Wallgate's previous hand wash dryer models, it was time to upgrade the units to save on cost, space and maintenance.

Teignbridge District Council wanted to install another all-in-one hand washing facility and, after a tendering process,

Wallgate's products were chosen once again – this time for upgrades across 12 sites.

33 next generation all-in-one Thrii hand wash dryers would replace the old models, using Wallgate's own hand wash replacement service for easy installation. The next generation all-in-one Thrii is specifically designed to meet the demands of a heavy footfall washroom, while offering intelligent controls and meeting water and energy efficiency specifications.

Wallgate's replacement service allowed the council to upgrade their older obsolete hand wash units easily to the Thrii hand wash dryer with a conversion kit, installation, thorough testing, configuration and commissioning.

CLIENT  
TEIGNBRIDGE DISTRICT COUNCIL

SECTOR  
LOCAL AUTHORITY

PRODUCT  
SOLID SURFACE THRII  
HAND WASH DRYER

# SOLID SURFACE TECHNOLOGY

Our solid surface material is made from a combination of specially formulated Polyester resin together with an extremely high-grade Aluminium Trihydrate resulting in a very tough, high impact, chemical and fire-resistant material.

Manufactured without the use of a gel coated surface, our solid surface products are able to be continuously repaired and refreshed so they look unspoilt throughout their life. The material meets the highest levels of durability and fire resistance.

Solid surface products have enabled end users to benefit from high quality sanitaryware, eliminating many of the problems experienced by the use of conventional washroom materials and products.

The nature of the solid surface ensures products have longevity, typically 25 years or more. It is an ideal solution in environments such as commercial, healthcare and secure facilities where standard sanitaryware is not enough.

All our solid surface products meet our own very high quality and aesthetic standards, as well as the industry's national and international performance standards.

## SOLID SURFACE BENEFITS

- 🛡️ Highly impact resistant
- 🛡️ Innovative
- 🛡️ Wide range of colours
- 🛡️ Non-flammable
- 🛡️ Renewable surface
- 🛡️ Stain-resistant

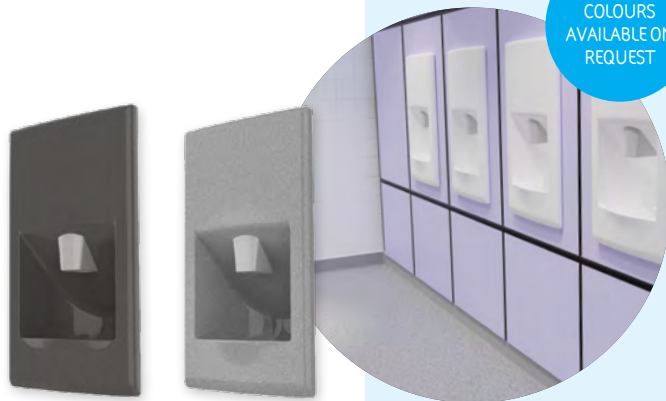
## SOLID AND SPECKLED-EFFECT COLOURS

Various colour options are available and custom colours can be made on request, meaning you will find exactly what you are looking for.

SEE PAGE 05 FOR ALL COLOURS

CUSTOM COLOURS AVAILABLE ON REQUEST

Available in a range of solid and speckled colours, allowing you to find the perfect match for your project's needs.

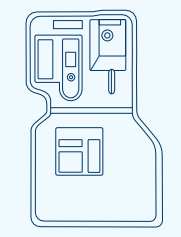


# WALLGATE THRII TECHNICAL SPECIFICATION



| COMPACT                     | STAINLESS STEEL             | SOLID SURFACE               |
|-----------------------------|-----------------------------|-----------------------------|
| Width 450mm                 | Width 450mm                 | Width 450mm                 |
|                             |                             |                             |
| Height 793mm                | Height 740mm                | Height 870mm                |
| <b>OVERALL DIMENSIONS</b>   | <b>OVERALL DIMENSIONS</b>   | <b>OVERALL DIMENSIONS</b>   |
| Width 450mm<br>Height 793mm | Width 450mm<br>Height 740mm | Width 450mm<br>Height 870mm |

## THRII ENGINE



The Thrii engine is available to purchase separately for projects that don't require a complete hand wash unit and will fit within your washroom design.

A wall cavity depth of 250mm is required for installation

### ELECTRICAL POWER REQUIREMENT

|                      |                      |
|----------------------|----------------------|
| 120V                 | 220 – 240V           |
| 50/60Hz Single phase | 50/60Hz Single phase |
| 1.8 kW               | 2.6 – 3.1 kW         |

### WATER SUPPLY REQUIREMENTS

Minimum Dynamic Pressure 1 Bar/100KPa  
Maximum Static Pressure 10 Bar/1000KPa

For full product information visit [www.wallgate.com](http://www.wallgate.com)

# HAND SOAP & CLEANING MATERIALS

The Walcare soap and cleaning materials range offers a low cost option available in 2.5 or 5 litre containers. All soaps are formulated to provide a continuous trouble-free operation. When used in our Thrii hand wash dryer units our soap can be dispensed as liquid or foam.

We offer a cleaning kit containing all of the materials required for everyday cleaning, refreshing and re-finishing to keep your solid surface units both hygienic and in pristine condition.



DETAILS ONLINE



# ASSURED AFTERCARE

As a company we treat aftercare very seriously. When you are buying a washroom, you can be assured that great care and attention is paid to ensure your project is delivered to the highest quality possible. An extensive after-sales service is available, including:

- ▮ Nationwide service engineers
- ▮ Technical support
- ▮ Commissioning
- ▮ Training
- ▮ Genuine parts
- ▮ Soap and consumables
- ▮ Maintenance contracts



**On-site commissioning services**  
with expert engineers to ensure products are performing to the highest standard



**Detailed guidance**  
to help you get the best from your new Wallgate Thrii units



**Easy maintenance**  
with front and rear access for soap refill and servicing



# DISCUSS YOUR NEXT PROJECT WITH OUR EXPERT TEAM

If you have an upcoming project you feel could benefit from our innovative hand wash dryers and want some helpful advice, contact our technical team:

**Tel:** +44 (0) 1722 744 594

**Email:** [sales@wallgate.com](mailto:sales@wallgate.com)

**Web:** [wallgate.com](http://wallgate.com)



SAVE OVER

**90%**

ON RUNNING COSTS



**Wallgate**<sup>®</sup>  
ROBUST. INNOVATIVE. WASHROOMS